

FINISH IT YOUR WAY!



LOCATED IN

Ashfield Park
 IN COVENTRY



MOVE-IN READY HOME

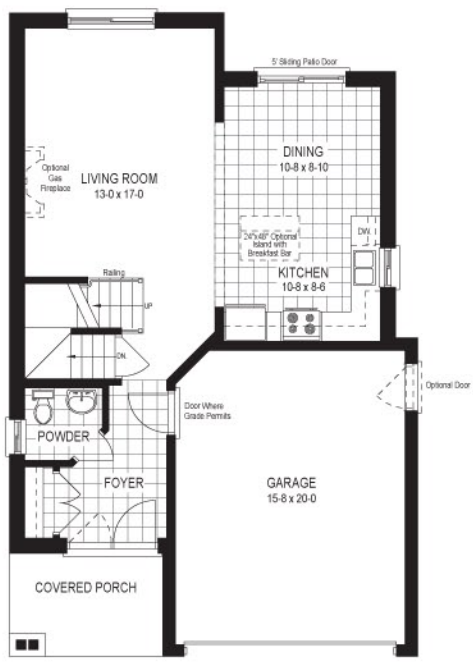
We've done all the hard work! This home will be completed to the drywall stage and is just waiting for you to select your finishes! All the fun without the wait!

THE BERKSHIRE - 1564 SQ. FT
 Elevation A
 Ashfield Park, Lot #22

HOME FEATURES:

- 3 Bedroom
- 1.5 Baths
- Open Concept Main Floor Living
- Luxury Shared Bath

90 DAY CLOSING AVAILABLE
\$275,300



MAIN FLOOR



SECOND FLOOR

Rendering is artist's concept of the completed building and is subject to change. Actual home layout may differ from layout displayed above. Plans and specifications are subject to change without notice. Actual usable floor space may vary from stated floor area. Illustrations are artists concept only and may show optional features not included in base price. See sales representative for further information. E. & O. E.

519.305.3009
 mycoventry.ca

